

Smoked out? Afraid to speak out? You're not alone.

Driven grouse shooting
is not farming

Burning moorland
is not conservation

It's mass destruction
of climate, nature and public health.

Toxic smoke pours into the valleys engulfing our homes, villages and schools. You can smell it. You can taste it. We are forced to inhale particulate matter from smoke, known to harm our health.

**ACT NOW! Call on Government
to put the fires out**

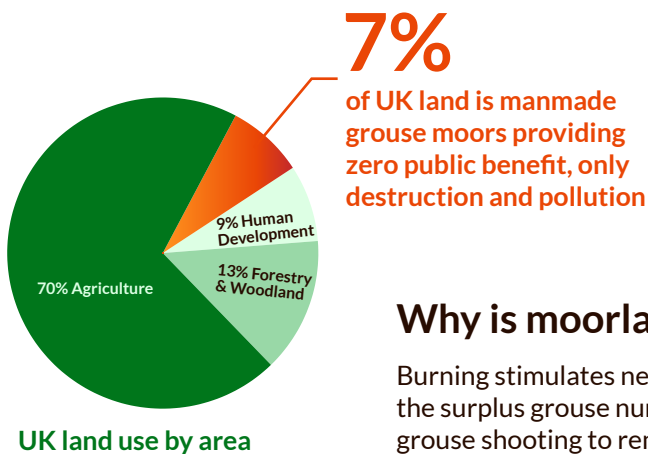
Respond to the consultation by **25th May**
at [Moorlands4climate-nature.org.uk](https://moorlands4climate-nature.org.uk)



Don't live in fear - your response can be confidential



How much land is being destroyed?



An area the size of Wales is set ablaze every 20 years

Why is moorland burned?

Burning stimulates new heather shoots to support the surplus grouse numbers required for driven grouse shooting to remain viable.

It doesn't stop with fire – manmade ditches drain the moors to promote conditions for heather growth.

Who gains?



£ Around 15,000 people travel from all over the world to pay up to £30,000 a day to shoot the birds

£ Fewer than 300 landowners profit

Who loses?



- × Climate
- × Nature
- × Public health
- × *All of us*





Reeth Infant School engulfed in smoke during school hours at 2:30pm, Tuesday 19th November 2024

What are the impacts?

Climate change

- UK peatlands store more carbon than the combined forests of Britain, France and Germany
- 80% of our peatlands are damaged, mainly due to grouse moor management
- CO₂ from damaged peatlands makes up around 5% of the UK's greenhouse gas emissions
- Countless tonnes of CO₂ are released every year as a direct result of the burning

Destruction of nature

- Burning abuse degrades soils which eventually disappear completely – the damage becomes permanent
- Half a million grouse are slaughtered each year in addition to the illegal killing of protected birds of prey -
This is killing on an industrial scale
- Burning and drainage creates manmade, barren wastelands void of nature, in our 'treasured' National Parks



Communities and public health

- Trapped communities can't escape and are forced to inhale toxic smoke which contains PM2.5, the most serious pollutant for human health
- Flood risk increases as damaged moors can't hold as much water, accelerating rainfall run-off to the communities below
- Rivers and drinking water are polluted with heavy metals from damaged peat
- Burning and drainage creates the arid, manmade landscape that increases wildfire risk

Give climate, nature and communities a voice
Download and share our leaflet and social media
post online at: [Moorlands4climate-nature.org.uk](https://moorlands4climate-nature.org.uk)





*There's nothing wild about the moors...
except the weather!*

Imagine what these burnt lands could become...



**Restored peatlands
protecting our
carbon stores**



**Healthy soils
supporting plant
and animal life**



**Uplands teeming with
nature & wildlife, supporting
health & wellbeing**



**Stop the destruction. Save our climate,
nature and public health.**

**Respond to the consultation by 25th May
at [Moorlands4climate-nature.org.uk](https://moorlands4climate-nature.org.uk)**

